



**Thank you for taking the time to review our line of air handling equipment.**

Cincinnati Fan has been manufacturing 1/4 to 125 horsepower, industrial fans and blowers for over fifty years. By strategically focusing our product designs, we have become...

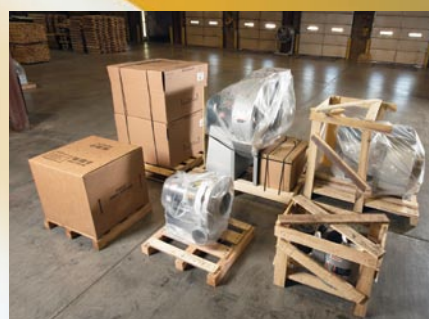
**"The OEM and Industrial Air Handling Specialists".**

Our core values, specialization, precision engineering and strict quality control are supported by highly trained, talented employees at all levels, each dedicated to a superior customer service culture.

From sales-to design-to manufacturing we strive to maintain the highest level of cost effective, efficient and dependable fans and blowers. Our on-going continuous improvement program is a cornerstone of our lean manufacturing journey.

Standard product packaging meets or exceeds freight industry standards.

Our dedication to prompt, on-time shipments allows us to ship the majority of our product line within 10-15 working days. Fourteen shipping/receiving docks insure timely inventory and product flow. We also offer a special *RUSH* program on many of our products for shipment in 5 working days, including most options and accessories.



**Custom builds, no problem.  
We can design and build to meet any required specification.**

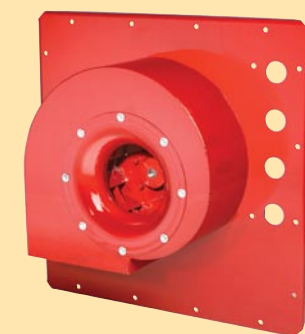
**Special Model LM-10**

Arrangement 1 fan with special base design. Special coating in and out to resist detergent.



**Special Model CPF-130**

85% width fan, special color match paint and a fan panel with additional access ports required by customer.



**Special SPB-9**

Customized inlet filter and inlet/discharge connectors on double blower gave customer a more compact, multi-function blower.



**Special Model HP-8D21**

Special 45° angle mounting base allows larger blower, capable of higher suction pressure, to fit under a standard table-top height.



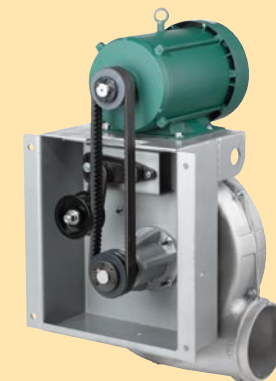
**Special Model LMF-4**

Model LMF-4 with customized, cast housing has special inlet collar and discharge flange to match customer's mating surfaces. For forced air drying of ink on printing presses.



**Special Model PB-15A**

Modified Arrangement 2 blower with drives and idler pulley enclosed in support base for mounting motor. Compact design to fit in a confined space.



**Over 170 experienced sales engineers across the U.S.A. and Canada are available to provide you with the highest level of support, including:**

- Technical system evaluation for correct performance conditions.
- Review of air stream and ambient conditions requiring special attention.
- Selection of proper components or accessories to meet your required specifications and industry or safety regulations.

**For more complete information,** please visit us at [www.cincinnati-fan.com](http://www.cincinnati-fan.com) or call us at **1-513-573-0600** for the name of our sales representative for your area.

**Thank you.**



7697 Snider Road • Mason, Ohio 45040

2M-0410-API



OEM and Industrial Air Handling Specialists

Cat. No. FL-0410  
Supersedes FL-0607



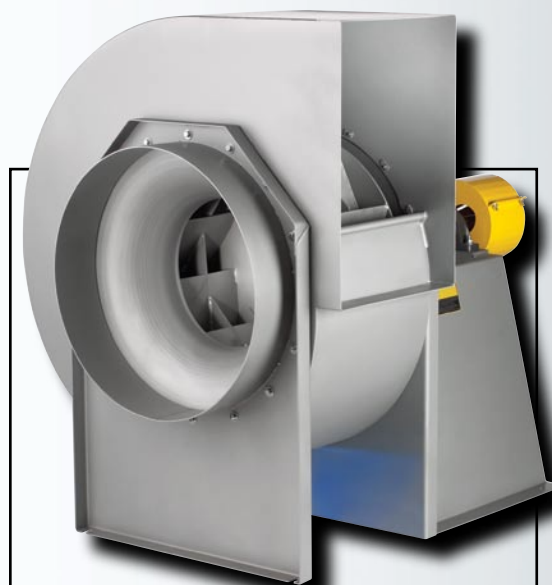
**Providing your air moving solutions, creatively, quickly, dependably.**

Our modern, state-of-the-art factory supports our world class manufacturing procedures with 3D CAD designs, automated order configuration, laser cutting equipment and robotic welders. Our computerized Fan Selection Program and Fan Quotation / Order Entry Program enhance and support your requirements for fast, dependable service.

Whether your needs involve conveying, exhausting, pressurizing, cooling, drying, dust and fume control, or general air movement, *we can help.*

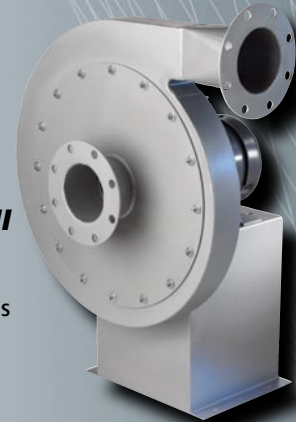


**For more complete information,**  
 please visit us at:  
[www.cincinnati-fan.com](http://www.cincinnati-fan.com)  
 or call us at 1.513.573.0600,  
 for the name or our sales representative for your area.  
**Thank you.**



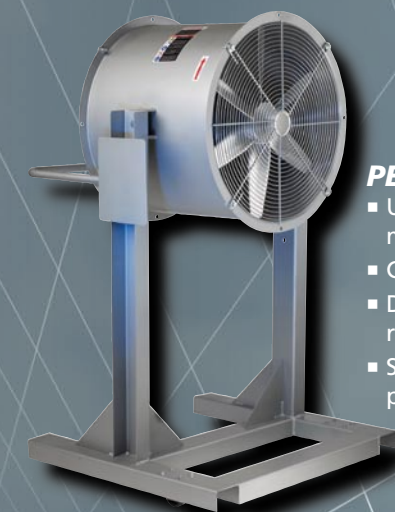
**HIGH PRESSURE BLOWERS SERIES I & II**

- Use for combustion air, blow-off, conveying and higher pressure applications
- Capacities to 6000 CFM and 55" WG
- Rugged standard steel, aluminum or stainless steel construction



**PERSONNEL COOLERS**

- Use for people, process and machinery cooling
- Capacities to 28,490 CFM
- Designed for continuous duty in rugged environments
- Spark resistant, cast aluminum propellers



**PORTABLE 2 STAGE DUST COLLECTORS**

- High efficiency, two stage, industrial construction
- Portable units from 335 to 1300 CFM. 1/3 to 3 horsepower motors
- Dust bag filtration down to 1 micron
- Continuous duty, TEFC motors are standard
- Made in the U.S.A.



**HDBI & HDAF HEAVY DUTY BLOWERS**

- Use for forced ventilation requiring higher volumes and pressure
- Available with backward inclined or airfoil wheels
- AMCA Class II, III and IV construction
- Capacities to 48,550 CFM and 21" WG
- Available in carbon steel, aluminum or stainless steel construction
- Belt or direct drive

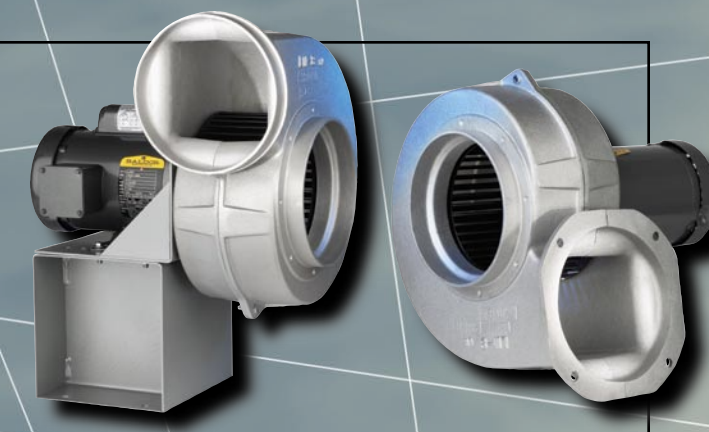


**SQBI & SQAF SQUARE FANS**

- Use for industrial cooling, ventilation and dust collection systems
- Available with backward inclined or airfoil wheels
- Capacities to 28,140 CFM and 23" WG
- Four discharge positions and two rotations
- Two wheel designs and eleven widths provide a wide range of direct drive ratings

**LM & LMF CAST ALUMINUM VOLUME BLOWERS**

- Use for forced ventilation and electronic cooling
- Capacities to 2000 CFM and 4" WG
- Cast aluminum and steel construction
- Two models offer base or flange mounting



**PB CAST ALUMINUM PRESSURE BLOWERS**

- Use for OEM and industrial cooling, conveying and pressurizing applications
- Capacities to 4500 CFM and 20" WG
- Cast aluminum, spark resistant, self cleaning wheels
- Cast aluminum housing



**RBE INDUSTRIAL EXHAUSTERS**

- Use for material conveying or higher pressure/higher volume applications
- Capacities to 25,600 CFM and 41" WG
- Rugged steel, aluminum or stainless steel construction
- Belt or direct drive

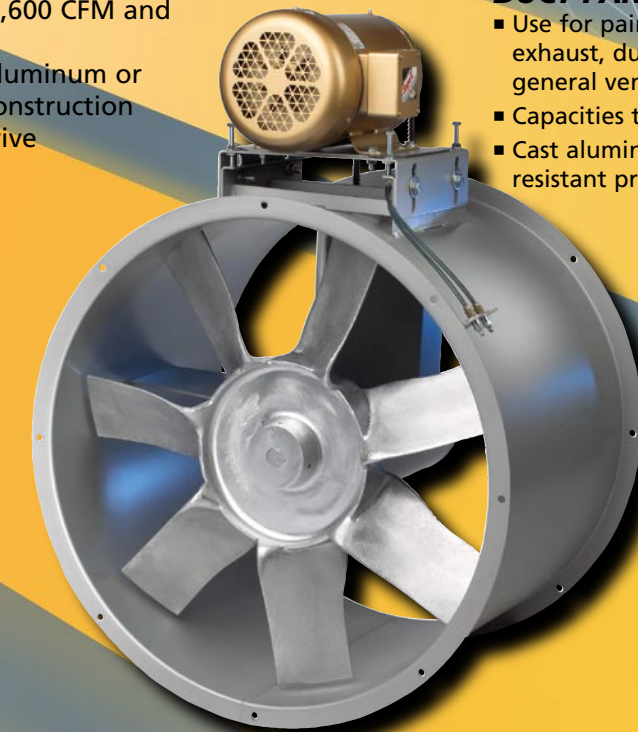


**PORTABLE EXHAUSTER-BLOWERS**

- Exhaust dirty, contaminated air from welding, brazing, soldering and etching operations
- Supply fresh air to tanks, manholes and confined areas
- Capacities up to 980 CFM
- Spark resistant construction. Continuous duty, TEFC motors
- Portable or stationary mount

**DUCT FANS**

- Use for paint spray booth exhaust, duct booster and general ventilation
- Capacities to 44,500 CFM
- Cast aluminum, spark resistant propellers



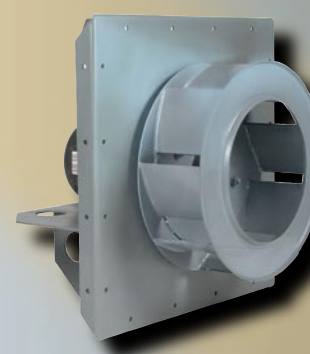
**SPB DIE FORMED STEEL PRESSURE BLOWERS**

- Use for OEM and industrial cooling, conveying and pressurizing applications
- Capacities to 4580 CFM and 19" WG
- Rugged 14 gauge steel housing with round inlets and outlets
- Spark resistant, self cleaning, cast aluminum wheels



**CPF & CPAF PLUG FANS**

- Use for ovens, dryers or dust collectors with or without fan housing
- Available with backward inclined or airfoil wheels
- AMCA Class II, III and IV construction
- Capacities to 26,890 CFM
- Arrangements 4 and 9
- Insulated plugs available up to 800°F



**PROPELLER FANS**

- Use for general ventilation
- Capacities to 38,650 CFM
- Heavy duty panel and motor support base
- Direct drive

